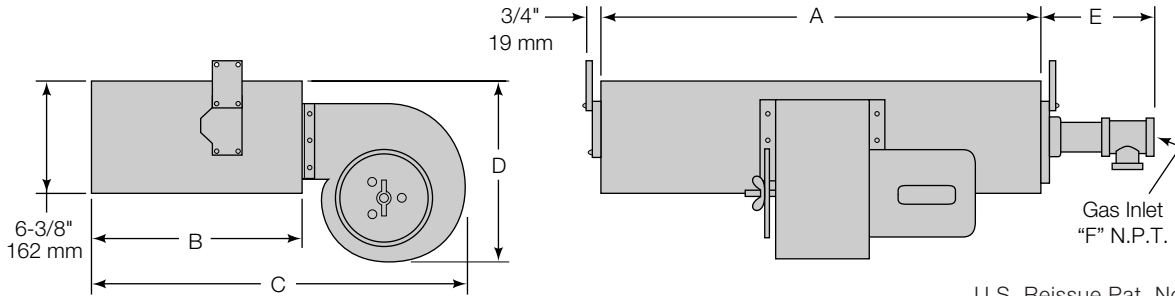


# ECLIPSE AIR HEAT BURNERS

## Dimensions—Series "AH"

Data 140-1

11/93



U.S. Reissue Pat. No. 26,244  
Canadian Pat. No. 743,782

### English Units

Burner Cat. No.	Assy. No.	Total Input (MM Btu/Hr.)		Blower Cat. No.†	Dimensions In Inches						Cross Sect. Area Sq. In.	Check Valve Pipe Style*	Approx. Ship Wt. Lbs.
		0.8 MM Btu/Ft.	1.0 MM Btu/Ft.		A	B	C	D	E	F			
40 AH	109654	0.4	0.5	54-54S-1/3	6-1/8	10-9/16	18	8-3/4	9-3/8	2	39	A	55
80 AH	109250	0.8	1.0	54-54S-1/3	12-1/8	10-9/16	19-5/16	9-11/16	9-3/8	2	77	A	70
120 AH	109251	1.2	1.5	54-54S-1/3	18-1/8	10-9/16	19-5/16	9-11/16	9-1/2	2	116	A	83
160 AH	109252	1.6	2.0	65-84S-1/3	24-1/8	12-5/16	25-1/4	15-9/16	9-1/2	2	154	A	96
200 AH	109253	2.0	2.5	65-84S-1/3	30-1/8	12-5/16	25-1/4	15-9/16	9-1/2	2	192	A	129
240 AH	109254	2.4	3.0	65-84S-1/3	36-1/8	12-5/16	25-1/4	15-9/16	9-1/2	2	230	A	150
280 AH	109255	2.8	3.5	65-84S-1/2	42-1/8	12-5/16	25-1/4	15-9/16	9-7/8	2	269	A	168
320 AH	109256	3.2	4.0	65-84S-1/2	48-1/8	12-5/16	25-1/4	15-9/16	9-7/8	2	307	A	196
360 AH	109257	3.6	4.5	66-94S-3/4	54-1/8	15-13/16	28-3/4	15-9/16	9-7/8	2	345	A	216
400 AH	109258	4.0	5.0	66-94S-3/4	60-1/8	15-13/16	30-3/4	15-15/16	9-7/8	2	383	A	240
440 AH	109259	4.4	5.5	66-94S-3/4	66-1/8	15-13/16	30-3/4	15-15/16	10-1/2	3	422	B	258
480 AH	109260	4.8	6.0	66-94S-1	72-1/8	15-13/16	30-3/4	15-15/16	10-1/2	3	460	B	294
520 AH	109261	5.2	6.5	67-115S-1-1/2	78-1/8	15-13/16	32-3/8	15-15/16	10-1/2	3	498	B	336
560 AH	109262	5.6	7.0	67-115S-2	84-1/8	15-13/16	32-3/8	17-9/16	10-1/2	3	536	B	360
600 AH	109263	6.0	7.5	67-115S-2	90-1/8	15-13/16	32-3/8	17-9/16	11	3	575	B	396
640 AH	109264	6.4	8.0	67-115S-2	96-1/8	15-13/16	32-3/8	17-9/16	11	3	613	B	408

### Metric Units

Burner Cat. No.	Assy. No.	Total Input kW		Blower Cat. No.†	Dimensions In Millimeters						Cross Sect. Area Sq. Cm.	Check Valve Pipe Style*	Approx. Ship Wt. Kgs.
		769 kW/M	962 kW/M		A	B	C	D	E	F			
40 AH	109654	117	147	54-54S-1/3	156	268	457	222	238	2"	252	A	25
80 AH	109250	234	293	54-54S-1/3	308	268	491	246	238	2"	497	A	32
120 AH	109251	352	440	54-54S-1/3	460	268	491	246	241	2"	748	A	38
160 AH	109252	469	586	65-84S-1/3	613	313	641	395	241	2"	994	A	44
200 AH	109253	586	733	65-84S-1/3	765	313	641	395	241	2"	1239	A	59
240 AH	109254	703	879	65-84S-1/3	918	313	641	395	241	2"	1484	A	68
280 AH	109255	821	1026	65-84S-1/2	1070	313	641	395	251	2"	1736	A	76
320 AH	109256	938	1172	65-84S-1/2	1222	313	641	395	251	2"	1981	A	89
360 AH	109257	1055	1319	66-94S-3/4	1375	402	730	395	251	2"	2226	A	98
400 AH	109258	1172	1466	66-94S-3/4	1527	402	781	405	251	2"	2471	A	109
440 AH	109259	1290	1612	66-94S-3/4	1680	402	781	405	267	3"	2723	B	117
480 AH	109260	1407	1759	66-94S-1	1832	402	781	405	267	3"	2968	B	133
520 AH	109261	1524	1905	67-115S-1-1/2	1984	402	822	405	267	3"	3213	B	152
560 AH	109262	1641	2052	67-115S-2	2137	402	822	446	267	3"	3458	B	163
600 AH	109263	1759	2198	67-115S-2	2289	402	822	446	279	3"	3710	B	180
640 AH	109264	1876	2345	67-115S-2	2442	402	822	446	279	3"	3955	B	185

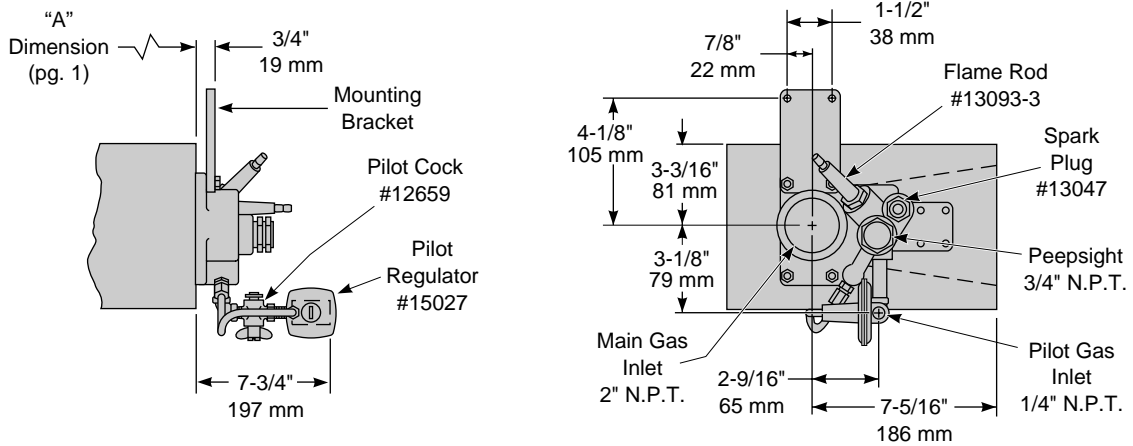
\* See page 2 for check valve piping styles.

† See Data 140-5 for blower details.

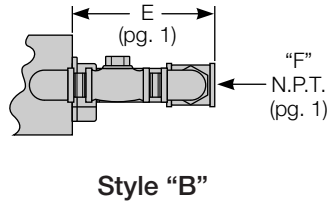
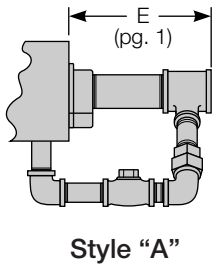


# Dimensions (Continued)

## Pilot Components & Dimensions



## Check Valve Pipe Styles

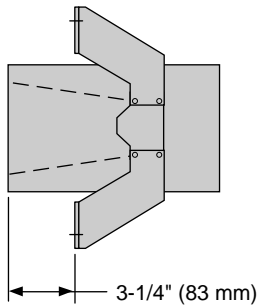
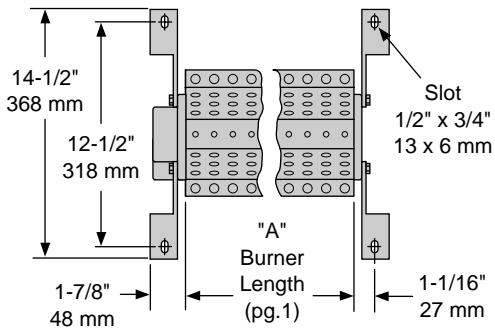


### Check Valve Assembly No.

Burner	Assy.	N.P.T.
40 & 80 AH	550088	1/2"
120 & 160 AH	550092	3/4"
200 & 240 AH	550096	1"
280 thru 400 AH	550100	1-1/4"
440 thru 640 AH	550104	1-1/2"

## Mounting Options

### 201 AH Brackets For Slot Firing



### Continuous Flanges Standard: Non-Welded Optional: All-Welded Pressure Sealed

